

ADAM™

THE COLECOVISION® FAMILY COMPUTER SYSTEM

DISK MANAGER SMART KEY CHART REFERENCE CARD



COLECO

ADAM™, SmartLOGO™, and SmartWRITER™ are trademarks of Coleco Industries, Inc. ColecoVision® is a registered trademark of Coleco Industries, Inc.

© 1984 Coleco Industries, Inc. All Rights Reserved.

Printed in U.S.A.

Guide No. 42879A

Item No. 7817

Ever wonder what those messages mean? Or wonder how to get *there* from *here* in the Smart Keys?

On pages 2 - 3 of this card is the information you need to understand the Disk Manager's messages and know what to do.

And to get from *here* to *there* and back *here* again, open the card and check the Smart Key Charts. They are like road maps designed to guide you on your route from the Action Keys (FORMAT, FILE OPTIONS, and SELECT DRIVE) to the completion of the task.

Follow the arrows; they show you what smart key labels appear after pressing any key.

Helpful Messages

While you are operating your Disk Manager, you'll notice several messages that appear in the message area. These messages inform you what ADAM is doing. For example, ADAM may say, "ONE MOMENT, LOADING" to let you know that the computer is quite busy carrying out your commands even though nothing appears to be happening on screen.

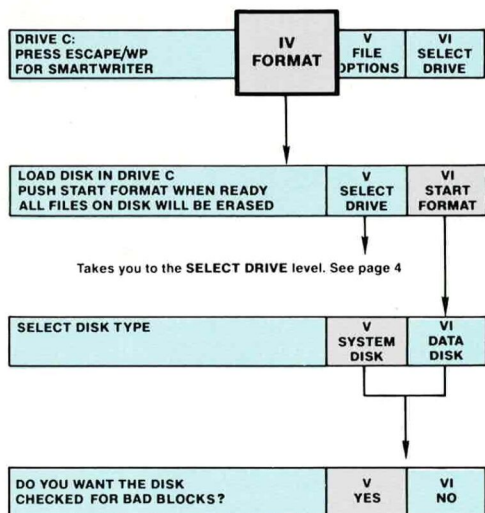
The messages sometimes alert you to a problem and suggest an action to fix it. Below is a list of the helpful messages that appear in the Disk Manager.

ONE MOMENT . . .	The ONE MOMENT message occurs whenever ADAM is doing a FORMAT, RENAME, RUN, COPY, or DELETE operation.
CANNOT FORMAT THIS DISK CHECK DOOR OR REPLACE DISK AND PRESS ESCAPE	You might be trying to format a write-protected disk. Use another disk.
CANNOT READ FROM SOURCE PRESS ESCAPE	ADAM found the directory, but the file name on the directory is not on the data pack or disk at the marked location. Did you change data packs or disks? Is the disk or data pack damaged?
CANNOT RUN THIS FILE PRESS ESCAPE	You probably changed the disk or data pack after ADAM read the directory. ADAM cannot find the file. Press ESCAPE/WP and put in the disk or data pack from which ADAM read the directory.
CANNOT RENAME THIS FILE PRESS ESCAPE	
THIS FILE ALREADY EXISTS. USE ANOTHER NAME PRESS ESCAPE	ADAM won't let you name two different files on the same data pack or disk with the same name. Choose another name.

(CONTINUE ON PAGE 3)

CANNOT WRITE TO DESTINATION	You might receive this message during COPY. You probably have a bad block on disk or data pack. Try again. If the message reappears, and if possible, reformat disk. If using data pack, try again. If message reappears, replace data pack.
REINSERT A FORMATTED DATA PACK OR DISK PRESS ESCAPE	<ol style="list-style-type: none"> 1. Try reading the disk or data pack again. If you are not able to read the data pack or disk, it may have a bad block. 2. You are trying to access a game data pack, or ELECTRONIC FLASH-CARD MAKER.
FILE DOES NOT FIT—USE ANOTHER DATA PACK OR DISK—PRESS ESCAPE	You have run out of space on the data pack or disk. You need another data pack or disk.
BAD BLOCKS ON THIS DISK—DO YOU WANT TO CONTINUE FORMATTING?	ADAM found a bad block. If ADAM finds another, it gives the CANNOT ACCESS FILE message. Try to format again, but it is best to get a new disk. You might be trying to format a write-protected disk.
CANNOT ACCESS FILE REINSERT DATA PACK OR DISK PRESS ESCAPE	<ol style="list-style-type: none"> 1. You might be trying to delete a locked file. 2. You changed the disk or data pack after ADAM read the directory. Press ESCAPE/WP and put in the disk or data pack from which ADAM read the directory.
DISK IS WRITE PROTECTED OR NON-FORMATTED—REPLACE WITH FORMATTED OR NON PROTECTED DISK—PRESS ESCAPE	You cannot copy onto a disk with a write-protect tab. Press ESCAPE/WP and use another disk or remove the tab. You might get this message if you use an unformatted disk.

Action Key FORMAT (IV)



When the operation is finished, Disk Manager's ACTION Keys reappear.

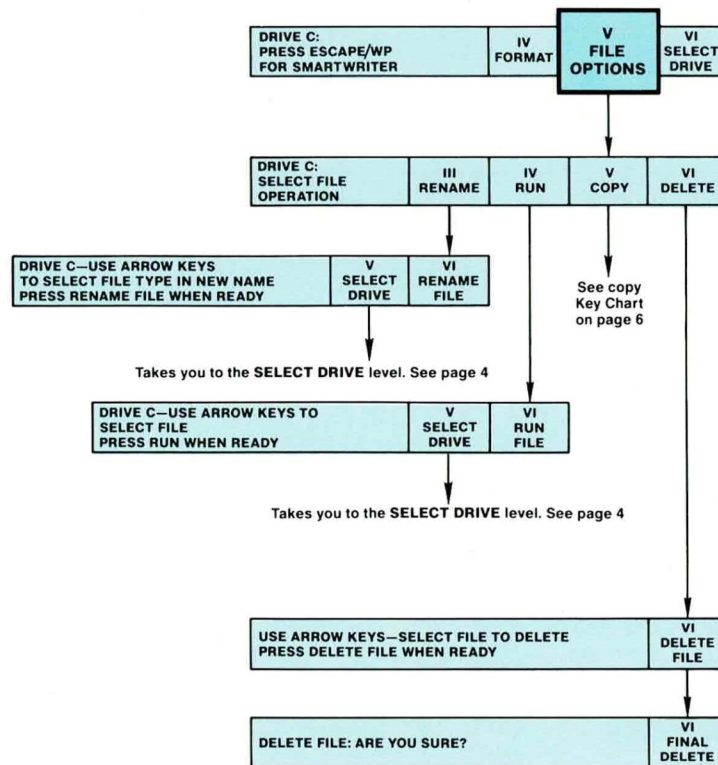
How To Read These Charts: Follow the arrows from key to key in order to see what levels of smart keys appear.

As an example, the gray key labels in the FORMAT chart show the series of key presses you would make if you wanted to make a System Disk and check for Bad Blocks.

How To Escape: To return to the Action Keys Level, press ESCAPE/WP.

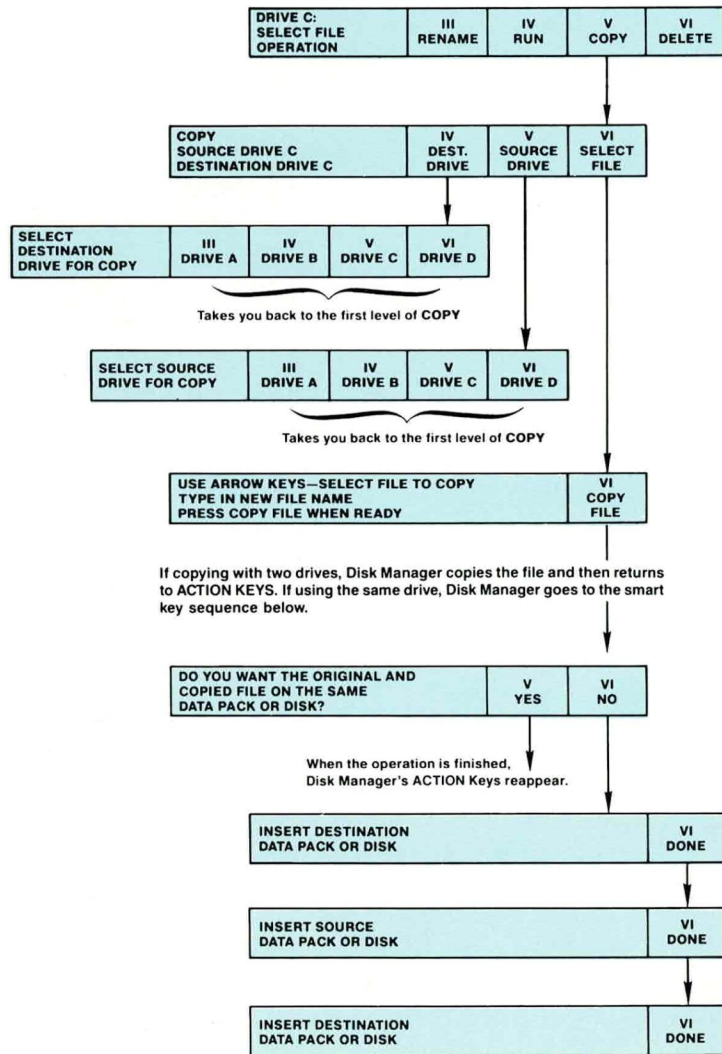
How To Get SmartWriter™: To go to SmartWriter or Electronic Typewriter, start from the Action Keys Level, and then press ESCAPE/WP.

ACTION Key FILE OPTIONS (V)



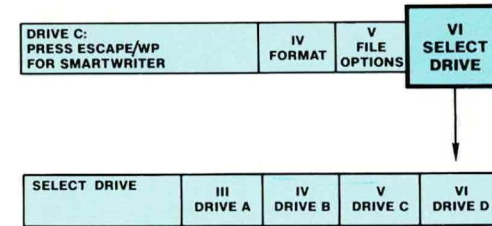
When the operation is finished, Disk Manager's ACTION Keys reappear.

FROM ACTION KEY FILE OPTIONS (V). Smart Key COPY



When the operation is finished, Disk Manager's ACTION Keys reappear.

Action Key SELECT DRIVE (VI)



When the operation is finished, Disk Manager's ACTION Keys reappear.