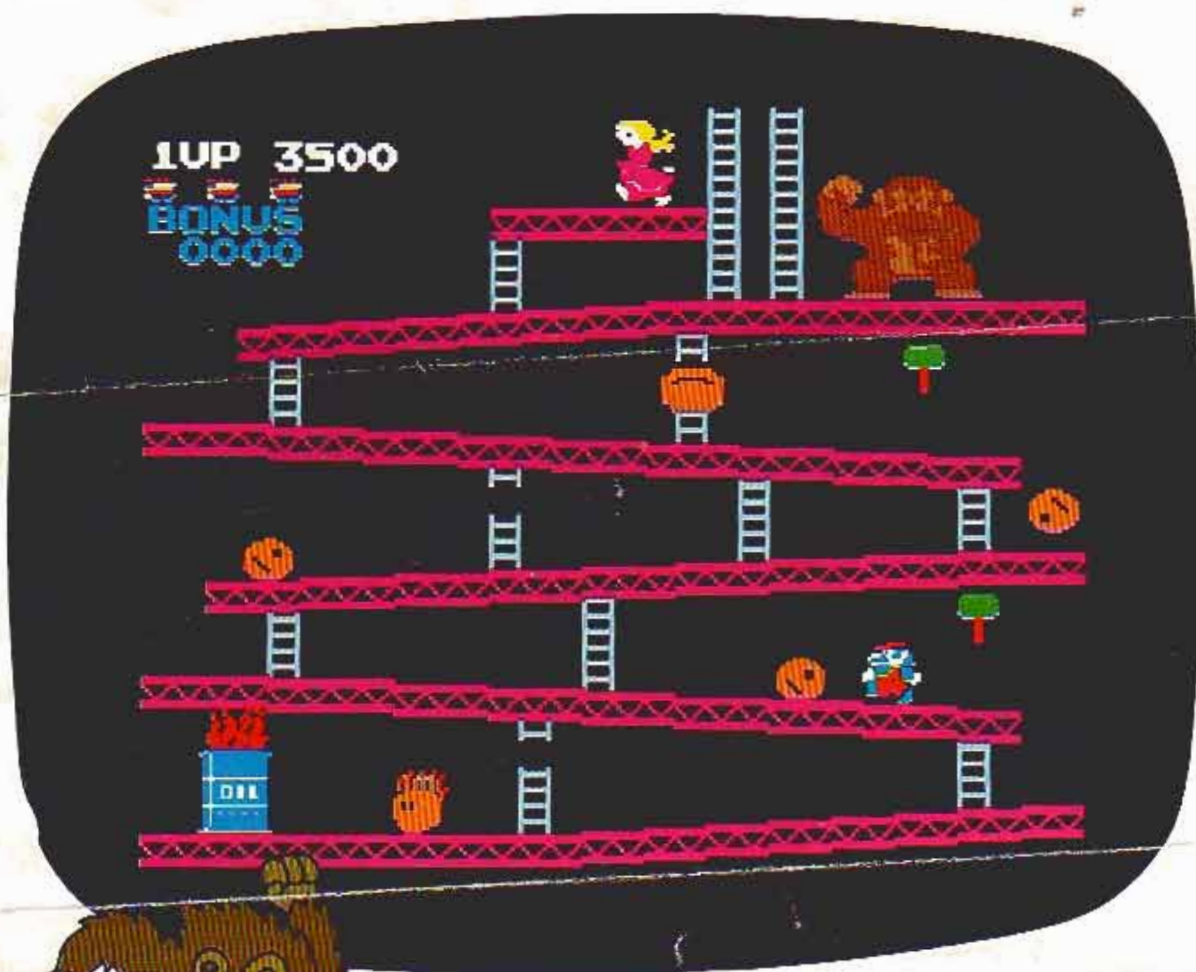


COLOR TUNING INSTRUCTIONS

PRINTED IN U.S.A. 74888



FOR MAXIMUM ENJOYMENT OF YOUR NEW COLECOVISION™ GAME SYSTEM, WE SUGGEST THAT YOU FOLLOW THESE SIMPLE STEPS:

- 1. FOLLOW THE INSTRUCTIONS FOR INSERTING THE DONKEY KONG™ CARTRIDGE IN YOUR COLECOVISION™ CONSOLE AND SETTING FOR NORMAL GAME PLAY.**
- 2. USING THE ACCOMPANYING ILLUSTRATION AS A GUIDE, ADJUST YOUR TELEVISION'S FINE TUNING CONTROLS (IF IT IS EQUIPPED WITH MANUAL CONTROLS), TO MATCH THE COLORS AS CLOSELY AS POSSIBLE. THIS WILL ENABLE YOU TO ENJOY THE BEST VISUAL EFFECTS POSSIBLE FOR DONKEY KONG™ AND OTHER COLECOVISION™ CARTRIDGES.**