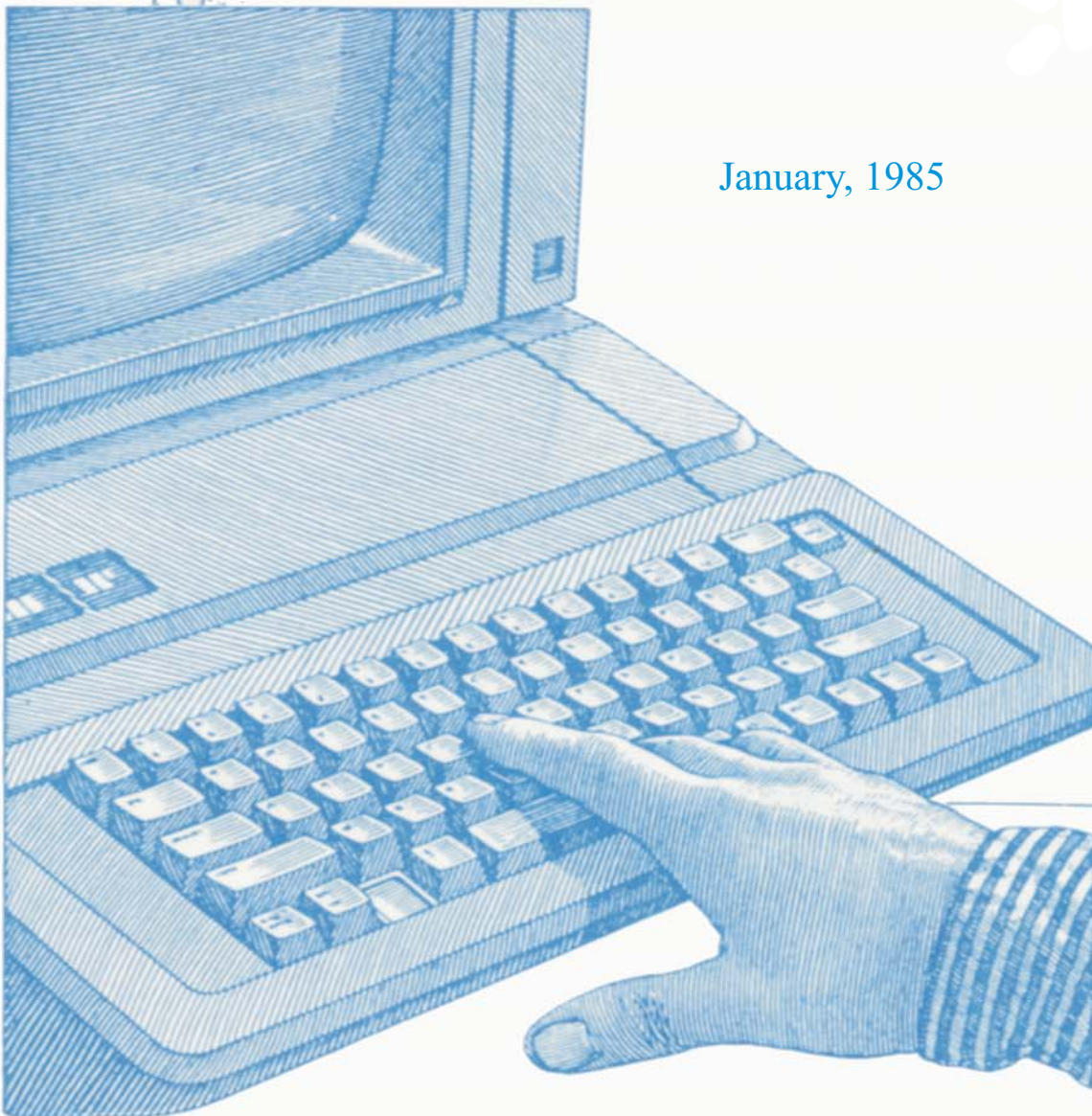


The
Extended Software Company
CATALOG
of
SOFTWARE
for the
Coleco A D A M Computer

January, 1985



Dear ADAM User,

We are proud to be able to present you with software for your ADAM computer. We currently are involved with several other computers and have a good opportunity to make comparisons. And the ADAM has many benefits and qualities that have been overlooked. Beside, we enjoy working with it as much or more than many of the others.

This catalog and the software in it represent many, many hours of work and we are proud of what we have to offer. We hope that you enjoy what we offer. We stand behind what is included here. Our aim is to bring you quality software at an equitable price. Since the decision you make must be based on our description, we make the following offer:

IF YOU ARE NOT COMPLETELY SATISFIED, YOU MAY RETURN THE PROGRAMS (and instructions) WITHIN 15 DAYS FOR A FULL REFUND OF YOUR PURCHASE PRICE.

WE NORMALLY SHIP ALL ORDERS WITHIN A DAY OR TWO OF RECEIPT OF THE ORDER.

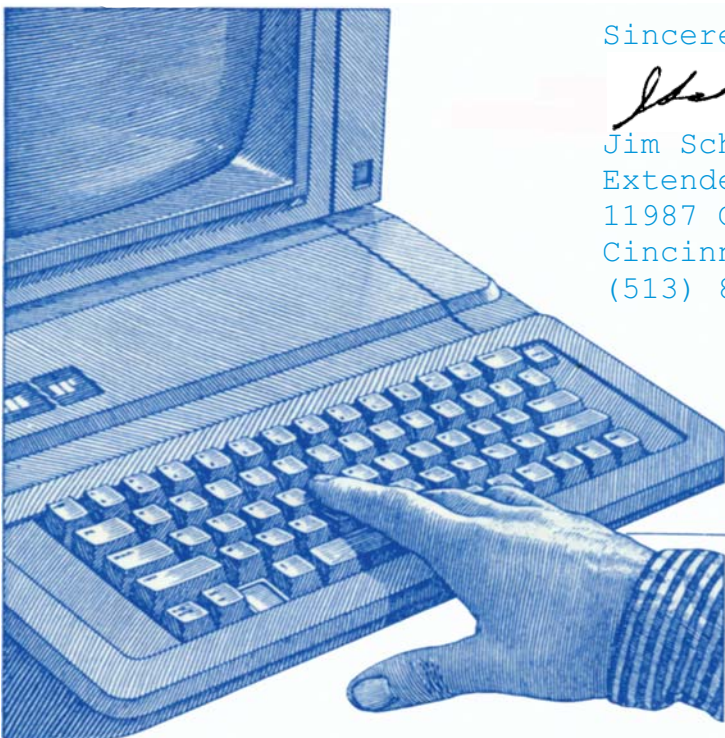
We have had many compliments on these policies and we consider them an important part of our service.

We look forward to serving the ADAM users for some time to come and, if you make a purchase from us, you will receive a copy of our future catalogs as they are up-dated.

Sincerely,



Jim Schwaller, President
Extended Software Company
11987 Cedar creek Drive
Cincinnati, OH 45240
(513) 825-6645



Extended BASIC Utilities Package



The Extended Basic Utilities (EBU) Package consists of several machine code routines that extend the capabilities of SmartBASIC by providing additional utilities or commands. It is intended for use by those knowledgeable in programming in BASIC who want additional capabilities. Demonstration programs are included to illustrate some of its uses.

The additional capabilities that the EBU provides include:

COLOR IN TEXT: You will be able to set ALL of the following to any of sixteen colors while in BASIC:

SCREEN COLOR
NORMAL CHARACTER FOREGROUND COLOR
NORMAL CHARACTER BACKGROUND COLOR
INVERSE FOREGROUND COLOR
INVERSE BACKGROUND COLOR
FLASH CHARACTER FOREGROUND COLOR
FLASH CHARACTER BACKGROUND COLOR

Color can greatly enhance the appearance of your text on a TV screen or monitor.

MUSIC: allows you to play a "music list" WHILE USING BASIC including: TEMPO, DURATION. INDEPENDENT TONES FOR EACH OF THE THREE VOICES, and INDEPENDENT VOLUMES FOR EACH OF THE THREE VOICES.

RENUMBER: allows you to renumber (resequence) your BASIC programs WHILE USING BASIC (including line references within the program lines). Resolves line references (GOTO, GOSUB, THEN, etc.). Starting line range: 10 to 65000+; step range: 1 to 255 between lines. A 25K BASIC program will typically be renumbered in about 4 SECONDS!

HEX-DECIMAL/DECIMAL-HEX CONVERSION: gives the hex and decimal equivalents of the value you enter.

The EBU routines load into the top end of SmartBASIC. The EBU routines take up 1217 memory locations, but we have used locations otherwise unavailable to the user and the overhead to the user is only 193 bytes. LOMEM IS SET TO 27600 WHEN THE EBU IS LOADED. The EBU data-pack or diskette includes SmartBASIC and is AUTO-LOADING (put it in the drive and pull the RESET button).

AUTO-LOAD DATA-PACK or DISKETTE.....\$22.00

* TAX1040-84 *

The TAX1040-84 program is simple and straight forward to use. It allows you to enter the tax information for Form 1040, Schedule A, and Schedule B. It performs calculations indicated on the forms. The information can be stored on data packs or diskettes, then retrieved and modified as necessary. A printout of the information on the forms can be produced.



When you pit the complexity of the current tax laws against the grand diversity of the financial situations of taxpayers in the United States, completing the tax forms becomes a very individual matter. Many decisions must be made by the taxpayer. The intention of this program is not to give legal or financial advice or make decisions for you, but to facilitate and store the information that you need in evaluating your tax posture.

The TAX1040-84 program allows you to make entries for the necessary lines on the IRS FORM 1040, Schedule A, Schedule B, and the worksheet on page 12 (charitable contributions). This information can be stored on a data device and retrieved for review and up-dating should you wish to consider alternative entries. Some parameters are established based on the information you enter and messages are given when you go outside those boundaries. For example, if you use a FILING STATUS of "Single" and try to take an IRA deduction in excess of \$2000, you will be warned that it is excessive.

AUTO-LOAD DATA-PACK or DISKETTE.....\$24.00



BONANZA PACKAGE

There are so many things that can be done in SmartBASIC that it is sometimes hard to decide where to start. This compilation of SmartBASIC programs will show you some of the versatility that programming can provide. Use them as a basis for designing programs tailored to suit your needs. See how you can make the ADAM do things that are of interest to you. List the programs and learn how to handle files, do graphics, write games, play music, and lots more.

And the programs are useful in themselves. Set up a budget, figure loans, learn how to type, play music, or just enjoy using the computer with games and graphics. There is more than can be described in words:

* HOME UTILITY PROGRAMS *

FILER: One of the most useful applications of computers is the filing of complicated information in a way that provides easy access to the information. FILER is a general "database" program that is designed to be modified for whatever kinds of information you need.

LABELS: Print a selection of particular entries from the database created with FILER. Sort on any of the pieces of data. Print out the information you stored in a convenient order or print labels on sheets of pre-gummed labels you can buy at many stationary stores. **FINANCE:** A combination of programs for:

Monthly budget - create a budget, store and up-date it each month.

Loan - Savings calculations - interest rates, payments, future value, minimum investment for set withdrawals, remaining balances.

Metric Conversions - 44 conversions (feet-centimeters, tsps.-ccs, quarts-liters, fahrenheit-celsius, grams-ozs., kilograms-pounds, acres-hectors, sq. feet-sq. meters, etc)

* FOR ADVANCED PROGRAMMERS *

ASSEMBLER: Write, edit, compile and save machine code programs and routines. (Requires knowledge of Z-80 code.)

DISASSEMBLER: Shows you the information stored in all 65,535 locations of the computer. See the BASIC interpreter, Elementary Operating System routines, tokenized BASIC programs, data areas, etc.

* GAMES *

TENNIS: Colorful with many skill levels. Keyboard or joystick control.

BREAKOUT: Five balls to try to break through a wall at the top of the screen by bouncing a ball with your paddle.

OTHELLO: An 8X8 board game pits you against the computer or another human player.

MANSION: A text adventure game in which you try to find treasure in an ancient mansion. Includes a HELP command.

MAGIC: The MENTAL illusion creates the impression that your ADAM can actually respond to spoken and written questions. The ANALYSIS illusion is based on what psychologists call the "Barnum Effect", often used in astrology and readings.

* EDUCATION *

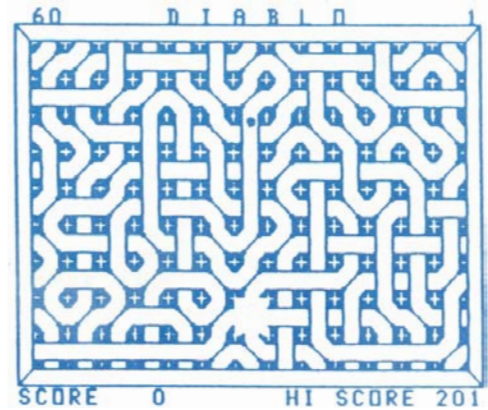
TYPYER: Learn to type and improve your skill - 10 lessons.

TRYME: A spelling game (GUESS WHO) and a math game (RACER) with visual and audio reinforcement for correct answers. In RACER you get gasoline to continue racing (graphics) your car if you answer the math questions correctly.

(continued on next page)

* DIABLO *

DIABLO, which derives its name from a European game of a half century ago known as DIABLOTIN, consists of 232 sections of track, two tracks on each of 116 movable panels. Players try to arrange the convoluted track to keep a moving ball on a continuous course. After a section of track has been traversed, it is removed from the board, thus reducing the available remaining track. The game becomes increasingly more difficult as less and less track is available to support the ever-advancing ball. Excellent graphics and sound support this game which requires substantial strategy, planning and control. Finding so much activity and variety in a program is truly surprising.



DIABLO is a machine language game and is AUTO-LOADING (insert data-pack or diskette and pull the RESET button). Every board is different. DIABLO makes good use of the color, graphics, and sprite capabilities of the ADAM computer.

DIABLO is from Image Microcorp and Extended Software.

AUTO-LOAD DATA-PACK or DISKETTE.....\$24.95

BONANZA Package (cont'd from previous page)

* MUSIC *

SOUNDER: Graphically place notes on G-cleft and Bass scales; play music with single key press. Includes canned music and sounds, tempo variations, 3 voices, and volume variations.

FUGUE: Music demonstration plays Bach's fugue in C minor in 3 voices.

* GRAPHICS *

DESIGN: Lets you design 16X16 figures in high resolution graphics on an enlarged grid. Save the figures for use in your programs.

PRETTY, PRETTY2, PRETTY3: Three mathematically generated high-resolution designs like you see on the more expensive computers. Analyzing the program can help you make some.

The BONANZA Package contains 18 programs in all, stored on 156K of the data-pack (disk version is on two disks). Includes a 23 page booklet of instructions.

The BONANZA programs operate in SmartBASIC and are from Martin Consulting.

DATA-PACK or DISKETTE.....\$35.00

* ORDER FORM *

EBU Package.....	\$22.00	D-pack or Disk	\$
TAX1040-84.....	\$24.00	D-pack or Disk	\$
BONANZA Package.....	\$35.00	D-pack or Disk	\$
DIABLO Game.....	\$24.95	D-pack or Disk	\$

Shipping & Handling: (No charge)

Name: _____ Add \$2.00 if C.O.D.: \$ _____

Address: _____ TOTAL: \$ _____

City, ST: _____ Zip: _____

Check enclosed MasterCard Visa

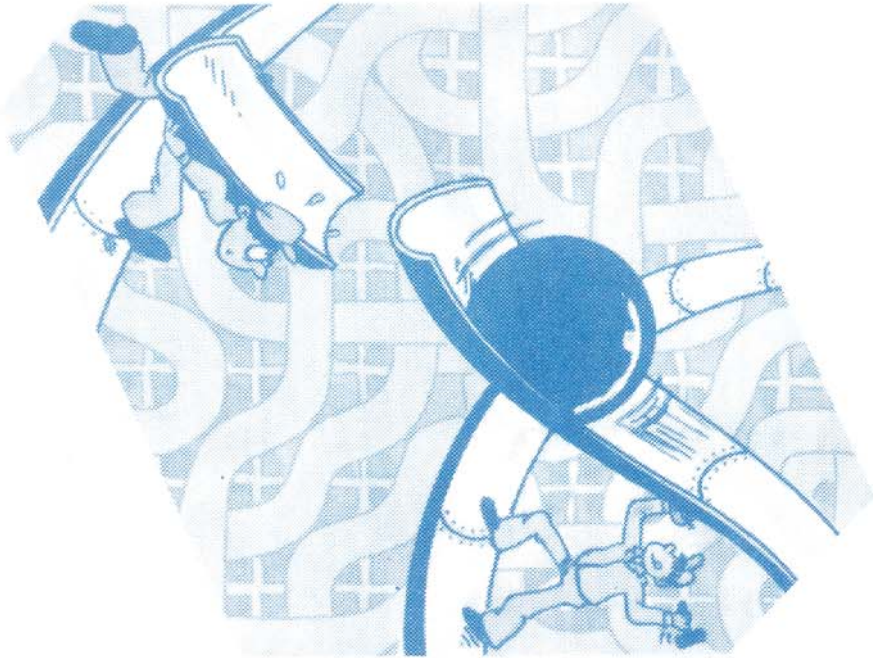
Card #: _____ Exp date: ____/____/____ Signature: _____



EXTENDED SOFTWARE COMPANY
11987 Cedar creek Drive
Cincinnati, Ohio 45240

IF YOU ARE NOT COMPLETELY SATISFIED,
YOU MAY RETURN THE PROGRAMS (and
instructions) WITHIN 15 DAYS FOR A
FULL REFUND OF YOUR PURCHASE PRICE.

EXTENDED SOFTWARE COMPANY
11987 CedarCreek Drive
Cincinnati, Ohio 45240
(513) 825-6645



FAMILY COMPUTING

