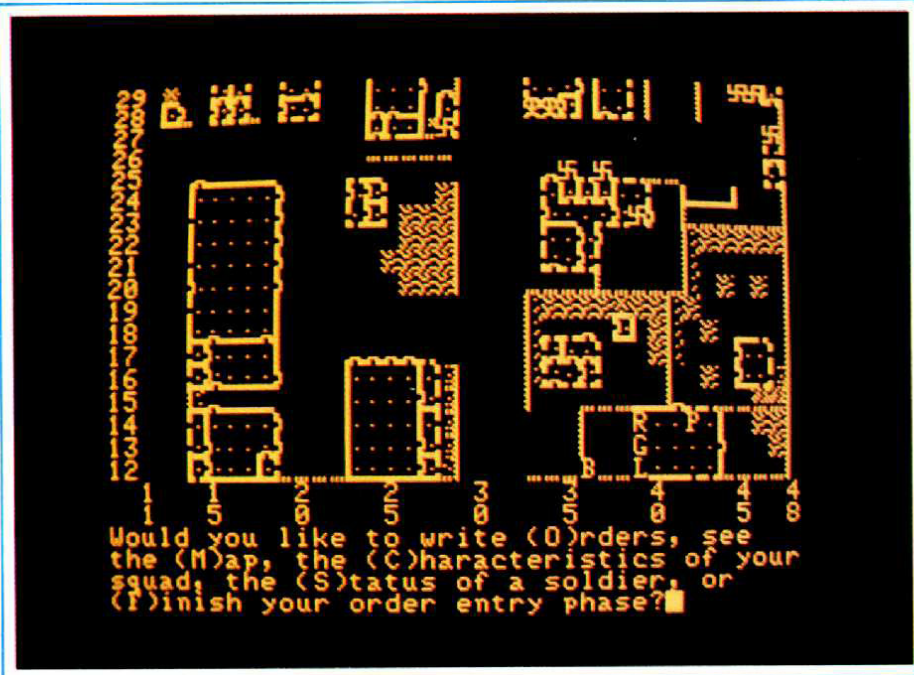


The platoon defends a barn from an onrushing German attack.



more involved than you have ever been in any other game or simulation.

As in most war games, the key to a successful strategy is to combine fire and movement. Each soldier's indi-

vidual movements must be a coordinated part of the entire squad's efforts. Some computerists will find it useful to mark down important time-points when they want to see some actions of

various soldiers all happening together.

There's a temptation, at first, to simulate the full 250 time-points on every turn. That *does* give players the opportunity to program long and complex movements. Experience suggests that this does not really allow the soldiers to respond fluidly to the ever-changing challenge of the battlefield.

Instead, we recommend that your turn simulate no more than 40 to 80 time-points (four to eight seconds of real time). In this way, you will "see" what happens in time to respond. On a real battlefield, after all, what soldier plans his action 25 seconds in advance, closes his eyes and moves blindly? Answer: A soon-dead one.

Computer Ambush is an excellent war game. As a computer game, it is an almost unbelievable programming feat. Considered as a computerized war game, the only word that truly fits is "masterpiece". Once again, Strategic Simulations proves itself a leader in the electronic war games field.

Don't just sit there — go and liberate a village! G

SUPR STICK-CC
Designed Specifically
for COLECOVISION®



COLECOVISION®
Type

SUPR STICK™

PROFESSIONAL JOYSTICKS

The ONLY Complete Line of
MICRO-SWITCH Activated Joysticks

**SUPR STICK
EXTRA-LITE**
Fits All ATARI®
Type Games and
Computers



ATARI®
Type

SUPR-CORDS

- 6 Ft. Game Extension for all Games & Computers
- 6 Ft. Joystick Extension for all 9 Pin Controllers
- "Y" Adapter COLECO® & INTELLIVISION®
Allows use of ATARI Type and original controller at the same time.
- "X" Adapter ATARI®: Allows use of only one control device for 2 player games.

DZYNE
VIDEO PROD. INC.™

64 DAYTON RD., WATERFORD, CT. 06385

Dealer and Distributor
Inquires Welcomed
Call 203-443-8354