

WE ♥ ADAM™

THE ADAM-X-CHANGE NEWS
copyright 1985



TELECOMMUNICATIONS

THIS MONTH WE WILL TALK ABOUT ONLINE ETIQUETTE....THE FOLLOWING IS A LIST OF RULES THAT, IF FOLLOWED, WILL KEEP YOU IN GOOD STANDING ON ALL BBS SYSTEMS.

- 1)DO NOT HABITUALLY HANG UP ON A SYSTEM. EVERY SYSOP IS AWARE THAT ACCIDENTAL DISCONNECTIONS HAPPEN ONCE IN A WHILE, BUT WE DO TEND TO GET ANNOYED WITH PEOPLE WHO HANG UP EVERY SINGLE TIME THEY CALL (CALL WAITING IS NOT AN ACCEPTABLE EXCUSE...YOU SHOULD FIND SOME WAY AROUND THAT TYPE OF SYSTEM). HANGING UP ON A SYSTEM CAN, DEPENDING ON THE FUNCTION IN USE AT THE TIME OF DISCONNECT, LOCK UP A BBS FOR LONG PERIODS OF TIME. WHEN A BBS IS LOCKED UP, ALL CALLERS WILL GET A BUSY SIGNAL, THUS YOU NOT ONLY GIVE THE SYSOP FITS BUT YOU ALSO DENY MANY USERS OF THEIR TURN ON THE SYSTEM.
- 2)DO NOT YELL OR USE CHAT MODE UNLESS YOU REALLY HAVE SOME CLEAR CLEAR CUT NOTION OF WHAT YOU WANT TO SAY AND WHY. ALMOST ANY SYSOP IS MORE THAN HAPPY TO ANSWER QUESTIONS OR OFFER HELP CONCERNING HIS SYSTEM.
- 3)ALTHOUGH SYSOPS USUALLY WILL TRY TO ANSWER ALL THE QUESTIONS PUT BEFORE THEM, THEY MOST OFTEN ARE VERY BUSY AND MAY TAKE AWHILE TO RESPOND. YOU SHOULD REMEMBER THAT MOST SYSOPS ARE JUST ORDINARY PEOPLE WITH FAMILIES, JOBS, ECT., AND CAN NOT BE EXPECTED TO RESPOND TO EVERY REQUEST WITHIN A FEW HOURS. IF YOU HAVE A QUESTION IT WOULD BE TO YOUR BENEFIT TO PUT IT IN THE FORM OF A MESSAGE TO ALL (REMEMBER THE SYSOP READS THE MESSAGES TOO!).
- 4)BEFORE YOU LOG ON WITH YOUR FAVORITE PSEUDONYM, MAKE SURE THAT HANDLES ARE ALLOWED. MOST SYSOPS DON'T WANT PEOPLE USING HANDLES ON THEIR SYSTEM. IT IS MUCH NICER TO DEAL WITH A PERSON ON A PERSONAL BASIS, REMEMBER THIS IS NOT A "CB". ALSO WHEN SIGNING ON FOR THE FIRST TIME, WHY NOT SIGN ON JUST LIKE YOU WOULD INTRODUCE YOURSELF? HOW MANY OF YOU INTRODUCE YOURSELVES AS JOE W. SMUTZ THE III OR IV OR SO ON?
- 5)WHEN LOGGING ON TO A SYSTEM FOR THE FIRST TIME, ANSWER ALL OF THE QUESTIONS. THESE QUESTIONS ARE PRESENTED FOR A REASON....THEY ARE INTENDED TO HELP KEEP TROUBLE MAKERS OFF THE SYSTEM. TROUBLE MAKERS CAN TIE UP A SYSTEM AND PREVENT YOU FROM USING IT FOR LONG PERIODS OF TIME.
- 6)DON'T GO OUT OF YOUR WAY TO MAKE RUDE OBSERVATIONS LIKE "SEE, THIS SYSTEM IS SLOW". EVERY BBS IS A TRADEOFF OF FEATURES. YOU CAN GENERALLY ASSUME THAT IF SOMEONE IS RUNNING A PARTICULAR BRAND OF SOFTWARE, THAT HE IS EITHER HAPPY WITH IT OR HE'LL DECIDE TO FIND ANOTHER SYSTEM HE LIKES BETTER. IT DOES NOBODY ANY GOOD WHEN YOU MAKE COMMENTS ABOUT SOMETHING THAT YOU PERCEIVE TO BE A FLAW WHEN IT IS ACTUALLY RUNNING THE WAY THE SYSOP WANTS IT TO. CONSTRUCTIVE CRITICISM IS SOMEWHAT MORE WELCOME. IF YOU HAVE AN ALTERNATIVE METHOD THAT SEEMS TO MAKE GOOD SENSE THEN RUN IT UP THE FLAGPOLE.
- 7)HAVE COMMON COURTESY TO PAY ATTENTION TO WHAT PASSES IN FRONT OF YOU ON THE SCREEN. WHEN A BBS DISPLAYS YOUR NAME AND ASKS "IS THIS YOU?", DON'T SAY YES WHEN YOU CAN SEE PERFECTLY WELL THAT IT IS MISPELLED. ALSO, DON'T START ASKING QUESTIONS ABOUT SIMPLE OPERATIONS OF A SYSTEM UNTIL YOU HAVE THOROUGHLY READ ALL OF THE INSTRUCTIONS THAT ARE AVAILABLE TO YOU. I ASSURE YOU THAT IT ISN'T FUN TO ANSWER A QUESTION FOR THE THOUSANDTH TIME WHEN THE ANSWER IS DISPLAYED IN THE SYSTEM BULLETINS OR HELP FILES.
- 8)IT DOESN'T MATTER WHETHER YOU LIKE A SYSOP OR THINK HE'S A JERK, THE FACT REMAINS THAT HE HAS A LARGE INVESTMENT IN MAKING HIS COMPUTER AVAILABLE, USUALLY OUT OF THE GOODNESS OF HIS HEART. IF YOU DON'T LIKE A SYSOP OR HIS SYSTEM, JUST REMEMBER THAT YOU ARE THE ONE DIALING THE NUMBER. WHETHER YOU ARE AWARE OF IT OR NOT, IF YOU MAKE YOURSELF ENOUGH OF AN ANNOYANCE TO ANY SYSOP, HE CAN TAKE THE TIME TO TRACE YOU DOWN AND MAKE LIFE, OR THAT OF YOUR PARENTS, MISERABLE.
- 9)KEEP FIRMLY IN MIND THAT YOU ARE A GUEST ON ANY BBS YOU HAPPEN TO CALL. DON'T THINK OF LOGGING ON AS ONE OF YOUR BASIC HUMAN RIGHTS. EVERY PERSON THAT HAS EVER PUT A COMPUTER ONLINE FOR THE USE OF OTHER PEOPLE HAS SPENT A LOT OF TIME AND MONEY TO DO SO. WHILE HE DOESN'T EXPECT NONSTOP PATS ON THE BACK, IT SEEMS REASONABLE THAT HE SHOULD AT LEAST BE ABLE TO EXPECT FAIR TREATMENT FROM HIS CALLERS. THIS INCLUDES FOLLOWING ANY OF THE RULES FOR THE SYSTEM USE HE HAS LAID OUT WITHOUT GRUMPING ABOUT IT. EVERY SYSOP HAS HIS OWN IDEA OF HOW HE WANTS HIS SYSTEM TO BE RUN. IT IS REALLY NONE OF YOUR BUSINESS WHY HE WANTS TO RUN IT THE WAY HE DOES. YOUR BUSINESS IS EITHER ABIDE BY WHAT HE SAYS, OR CALL SOME OTHER BBS WHERE YOU FEEL THAT YOU CAN OBEY THE RULES.

PARTS OF THE ABOVE LIST ARE BEING RE-PRINTED WITH PERMISSION FROM THE DENVER ADAM USER'S GROUP. MANY THANKS DAUG!

COBRA BBS

OH WELL, IN THE LAST ISSUE I LIED. I HAVE BEEN UNABLE TO COMPLETE THE CHANGES MENTIONED IN THE LAST NEWSLETTER. I HAVE BEEN HAVING SOFTWARE/HARDWARE PROBLEMS RELATED TO THE NEW MODEM. I HOPE BY THE NEXT NEWSLETTER I WILL HAVE THESE CHANGES COMPLETED. WHEN COMPLETED I WILL HAVE 300/1200 BAUD CAPABILITIES FOR THOSE OF YOU WITH THE RS-232 AND AN EXTERNAL MODEM!

MANY PEOPLE ARE STILL ASKING IF YOU CAN DOWNLOAD CP/M FILES WITH ADAMLINK II. THE ANSWER IS NO, BUT, IF YOU HAVE CP/M, YOU CAN GET THE PROGRAM YOU NEED FROM THIS BBS. THIS FIRST STEP IS TO DOWNLOAD MBOOT.DOC FROM THE FILE LIST WITH ADAMLINK II. THIS FILE WILL GIVE YOU THE BASIC STEPS NEEDED TO BE ABLE TO DOWNLOAD MADAM7.COM FROM THE COBRA.

ANY MEMBERS THAT CALL THE COBRA SHOULD HAVE STATUS LEVEL 70. IF YOU DO NOT HAVE THIS LEVEL PLEASE LEAVE ME A MESSAGE AT LOGOFF AND I WILL QUICKLY UPGRADE YOU. MEMBERS ALSO HAVE UNLIMITED DOWNLOADS, SO, IF YOU FIND YOUR NUMBER GETTING LOW, GIVE ME A KICK AND I WILL GIVE YOU MORE. THESE ITEMS ARE HARD FOR ME TO KEEP TRACK OF. THE TWO SYSTEMS I USE HERE DO NOT INTERACT, SO I CAN NOT CROSS REFERENCE THE MEMBER FILES WITH THE COBRA USER FILES ELECTRONICALLY.

THE COBRA BBS NUMBER IS (315) 594-9372 24HRS

HONEYWELL UPDATE

HONEYWELL HAS BEEN INFORMED BY COLECO THAT THEY WILL BE SUPPLIED WITH PARTS FOR THE ADAM ONLY THRU THE END OF NEXT YEAR. THIS IS NOT GOOD NEWS FOR US ADAM OWNERS! HONEYWELL WILL MOST CERTAINLY DROP ADAM SERVICE WHEN THE PARTS ARE CUTOFF. I DO BELIEVE THAT SERVICE WILL BE AVAILABLE THRU INDEPENDENT COMPUTER REPAIR SHOPS FOR MANY YEARS TO COME. SAMS, AN INDEPENDENT SERVICE MANUAL PUBLISHER, IS SUPPOSED TO RELEASE A COMPUTER FACTS MANUAL FOR THE ADAM THIS FALL. THIS MANUAL WILL MAKE IT POSSIBLE FOR THE SMALLER SHOPS TO REPAIR AND SERVICE THE ADAM.

FOR THE TIME BEING, HONEYWELL IS STILL PROVIDING A VERY REASONABLE REPAIR SERVICE FOR THE ADAM. OF COURSE, IF YOUR ADAM IS STILL WITHIN THE WARRANTY ANY REPAIRS ARE FREE, BUT, IF YOUR ADAM IS NOW OUT OF WARRANTY YOU WILL FIND THE REPAIR RATES TO BE VERY GOOD.

\$34.95=>PRINTER MINOR ADJUSTMENT OR REPAIR
\$60.00=>PRINTER POWER SUPPLY/PRINT HEAD REPLACEMENT
\$40.00=>DIGITAL DATA DRIVE REPLACEMENT
\$75.00=>CPU REPLACEMENT

CHECK WITH YOUR NEAREST HONEYWELL SERVICE CENTER BEFORE SENDING ANY UNIT FOR REPAIR.

SPEECH SYNTHESIZER

EVE ELECTRONICS HAS BEGAN PRODUCTION OF THEIR SS-CC SPEECH SYNTHESIZER-CLOCK CALENDER. PRODUCTION BEGAN IN MID SEPTEMBER AND IF THEY ARE ON SCHEDULE THE UNIT SHOULD BE AVAILABLE NOW. THE PRICE (WHICH WAS ORIGINALLY \$89.95) IS REPORTED TO BE \$109.95. THIS UNIT WILL GIVE A VOICE TO YOUR ADAM. EVE ALSO HAS A DISK CONTROLLER AND A 80 COLUMN CARD PLANNED FOR RELEASE THIS YEAR.

THERE IS ANOTHER COMPANY THAT IS WORKING ON HARDWARE FOR THE ADAM. ROGERS CO. HAS REPORTEDLY COMPLETED WORK ON A CLOCK CALENDER AND HAS AN RS232 INTERFACE NEARLY FINISHED. THIS CO. ALSO HAS RAM BOARDS, 80 COLUMN CARD, AND AN APPLE EMULATOR IN THE WORKS.

WHAT IS A TURNKEY?????

TURNKEY IS THE NAME GIVEN TO A PROGRAM THAT LOOKS FOR A PROGRAM NAMED "HELLO" AS SOON AS SMARTBASIC IS LOADED. TO USE THIS SYSTEM YOU CAN WRITE ANY PROGRAM, SHORT OR LONG, SAVE IT AS "HELLO" ON YOUR BASIC TAPE AND IT WILL BE RUN AUTOMATICALLY. I HAVE USED THIS SYSTEM TO SET THE SCREEN COLOR AND CHANGE THE CURSOR ON MY SMARTBASIC SCREEN TO BE MORE PLEASING TO MY EYE. YOU COULD ALSO USE THIS SYSTEM TO RUN A PROGRAM THAT IS USED REGULARLY. HERE IS A LITTLE "HELLO" ROUTINE THAT WILL CHANGE THE SCREEN COLOR, REDEFINE THE CURSOR, LET YOU KNOW WHEN BASIC IS LOADED, AND CLEAR THE MEMORY.

```
10 POKE 17059,4: TEXT
20 POKE 16953,2:
30 PRINT
40 PRINT "          BASIC IS NOW LOADED!"
50 POKE 17000,1
60 NEW
```

TYPE IN THIS PROGRAM AND SAVE IT AS "HELLO" ON YOUR SMARTBASIC TAPE. IF YOU WOULD LIKE TO SEE WHAT IT DOES BEFORE YOU SAVE IT TO YOUR BASIC TAPE YOU WILL HAVE TO LEAVE OUT LINE #60. IF YOU TRY TO RUN THIS PROGRAM WITH LINE #60 YOUR LISTING WILL BE LOST AND YOU WILL HAVE TO RE-TYPE THE PROGRAM. A WORD OF CAUTION....IF YOU ONLY HAVE ONE SMARTBASIC TAPE, BE CAREFUL!

SmartTYPE REVIEW by Don Zimmerman

SmartTYPE BY REEDY SOFTWARE (\$24.95 DDP/disk) IS THE FIRST OF THE MUCH NEEDED SOFTWARE THAT WILL DO SOME OF THE THINGS THAT SmartWRITER LEFT OUT. THE MAIN FEATURE OF SmartTYPE IS THE ABILITY TO CENTER, LEFT JUSTIFY, RIGHT JUSTIFY, AND TO LEFT AND RIGHT JUSTIFY TEXT. IT ALSO WILL INSERT AND DELETE FULL LINES AND TAKE YOU TO THE BEGINNING OR END OF THE TEXT OR TO A SELECT LINE NUMBER WITHIN THE TEXT. IT IS A 14 BLOCK BASIC PROGRAM THAT MUST BE LOADED BEFORE IT CAN BE USED. I COPIED BASIC TO A DISK, LOADED SmartTYPE, RENAMED IT "HELLO" AND RESAVED IT TO DISK. THE LOADING TIME IS 30 SECONDS. NOT TOO BAD IF ONE CAN RECALL HOW LONG BASIC TOOK TO LOAD FROM TAPE. IT HAS A TWO COLUMN TEXT ENTERING FEATURE, IS Smartkey MENU DRIVEN, ALLOWS PRINTING OF ALL OR SELECTED LINES, HAS A NICE Smartkey SELECTION THAT PULLS THE ENTIRE LINE LEFT OR RIGHT LIKE SmartWriters' BACKSPACE, AND CAN LOAD AND SAVE TEXT.

SmartTYPE IS NOT A REPLACEMENT FOR SmartWriter. IT LACKS MANY OF Smartwriters' CAPABILITIES SUCH AS INSERTING AND DELETING SELECTED PARTS WITHIN THE TEXT. IT IS LIMITED TO 60 LINES PER FILE AND THE PRINT FEATURE IS NOT BIDIRECTIONAL. THIS CAN BE OVERCOME BY SAVING THE TEXT, PULLING THE RESET, LOADING THE TEXT INTO Smartwriter AND PRINTING IT. FIRST YOU MUST DELETE SmartTYPE's HEADER AND FOOTER DATA. THE ONE PAGE (60 LINES) LIMITATION IS TOO BAD BECAUSE EACH PAGE CAN QUICKLY BE SAVED TO DISK AND QUICKLY PULLED UP AND PRINTED USING SmartWriter. THE MOST SEVERE RESTRICTION OF SmartTYPE IS THE REQUIREMENT OF ENTERING, EDITING, AND JUSTIFYING TEXT ONE LINE AT A TIME WITHOUT SMARTWRITER'S WORD WRAP FEATURE. EACH LINE IS LOCKED IN WITH A CARRIAGE RETURN AT THE END OF EACH LINE. THIS MEANS THAT IF YOU TRY TO DELETE PART OF A LINE USING SmartWriter IT CAN NOT PULL THE REST OF THE TEXT IN PLACE. ONCE A LINE HAS BEEN LEFT AND RIGHT JUSTIFIED THE EXTRA SPACES THAT IT ADDED INBETWEEN THE WORDS CANNOT BE REMOVED AND THE ENTIRE LINE MUST BE REENTERED IF ANYTHING OTHER THAN OVERTYPING IS REQUIRED.

OVERALL SmartTYPE IS EASY TO USE EVEN IF IT SLOWER THAN USING Smartwriter. THE ABILITY TO PRINT AND THE SOMEWHAT LIMITED ABILITY TO EDIT WITH SmartWriter MAKES SmartTYPE A USEFUL WORD PROCESSING ADDITION TO ADAM. THE FINAL PRINTOUT LOOKS TERRIFIC AND THE ABILITY TO ENTER ANYTHING AT THE BEGINNING OF THE LINE, PRESSING A KEY, AND WATCHING IT PULL THE TEXT TO THE RIGHT MARGIN WITHOUT THE TEDIOUS WORK REQUIRED BY SmartWriter TO DO THIS MAKES THE EXTRA EFFORT WORTH IT FOR IMPORTANT LETTERS.##### RATING: B #####

PS: JACK REEDY SAID A BI-DIRECTIONAL VERSION WILL BE OUT SOON.

The E-8 Test

Has this ever happened to you? You are working late at night, putting in long hours to finish an important project that has to be in the mail first thing in the morning, and finally you have everything just the way you want it. You are ready to print. You hit the print key and the printer comes to life. The mechanism slides over to the left, just like you expected it to, but suddenly, it makes a funny high pitched whine, and it dies. right there in the middle of your project.

If you are like me, you probably slapped you head and thought to yourself how you could have bought an Apple. Well, panic not... there is a cure. I have worked with not less than 5 Adams, and I have had three of them pull this little stunt. I have discovered a cure that has worked on all three. Its called the E-8 test, and although it might sound a little strange, you can call the good folks at Coleco and they will confirm that this is the way to fix the problem.

First, if you have not done so already, save your work. Next, remove the cover from you printer. If you look inside, you will see the circuit board which controls the printer. Up in the upper left hand corner, right in front of a silver metal box you will find a marking...E-8. Actually it will show up as 8-(backwards capital E). Next to it will be a small silver dot. Now what you need to do is turn off your Adam. Slide the printer mechanism all the way over to the right. Now get a screw driver, or a paper clip, or even a butter knife will do. (I have had the best luck with a broad bladed butter knife.) You are going to short out the printer. (Don't worry, there is no hazard to you.) Make sure that there is paper in your printer. You will put the butter knife, or the paper clip, or the screw driver on the small silver dot and make contact on the silver metal box. With you other hand, turn on the printer. Now hold that contact until the printer mechanism starts to slide over to the left. As the printer mechanism slides to the left, move you hand. It should slide all the way over to left and start printing alot of trash. (@#\$\$%##!@##QWEEQWERRITY Etc. or something similar.) Of course it may not. But you will know when its right because it will stop making the funny whining noise when it reaches the far left side. You may have to try this a couple of times but it really does work. When the printer stops with the funny noise you know that it is fixed.

Next, turn off your Adam one more time. Turn it back on, load your work, and print away!

I don't know why this works. The people that answer the 'Hot line' at Coleco don't know why this works, but it really does. So good luck, and happy printing!

Our Thanks to A.K. Michaud, Benbrook, Texas for this article.

REVIEWS

PRODUCT: **BACKUP+ 2.0**
 PRODUCED BY: **MMSG**
 DISK OR DDP (REVIEWED IN DISK FORMAT)
 CURRENT PRICE: \$40 DDP/\$37 DISK
 90 DAY WARRANTY

THE FIRST ITEM THAT I LIKED ABOUT THIS SOFTWARE WAS THE ALMOST INDESTRUCTABLE FORMAT. WHEN YOU ORDER ANY PRODUCT FROM **MMSG**, YOU RECEIVE **TWO** COPIES. YES, YOU RECEIVE TWO DDPS OR DISKS WITH EACH ORDER WITH EACH CONTAINING **TWO** COPIES OF THE PROGRAM. THE PROGRAM IS A SELF-BOOTING MACHINE LANGUAGE FORMAT WHICH USES A "LOADER" ROUTINE TO LOAD AND VERIFY THE MAIN PROGRAM. IF THE LOADER DETERMINES THAT THERE IS AN ERROR IN ANY PORTION OF THE REMAINING DATA, IT WILL AUTOMATICALLY SWITCH TO THE ALTERNATE COPY LOCATED IN A DIFFERENT LOCATION ON THE DISK OR DATA-PAK. ALTHOUGH THERE IS NO SELF COPY FUNCTION, THIS FORMAT IS LIKE RECEIVING **FOUR** COPIES OF THE SAME PROGRAM. WITH PROPER CARE YOU SHOULD NEVER HAVE TO BE WITHOUT THE USE OF THIS PROGRAM.

THE PROGRAM ITSELF USES TWO TYPES OF USER INPUT; "LIVE KEYBOARD" WHICH ONLY REQUIRES A SINGLE KEY STROKE TO INITIATE A FUNCTION, AND "LINE INPUT" WHICH REQUIRES A MENU SELECTION FOLLOWED BY A >RETURNK.

SOME OF THE FEATURES INCORPORATED IN THIS PROGRAM INCLUDE THE FOLLOWING; A **40K BUFFER** WHICH WILL ALLOW YOU TO MAKE COPIES WITH FAR LESS MEDIA SWAPPING....AUTOMATICALLY **MODIFIES BASIC** WHEN COPIED TO DISK SO YOU WILL NOT LOOSE THE "HELLO" FEATURE....HAS A **CATALOG MENU** WHICH ALLOWS YOU TO SHOW ACTIVE OR DELETED FILES....WILL **COPY ENTIRE TAPE OR DISK OR WILL COPY BY FILE** SO YOU CAN PUT ONLY THE FILES YOU WANT ONTO YOUR DESTINATION WITH ONLY A SIMPLE "Y" OR "N" ENTRY AS THE DIRECTORY OF THE SOURCE MEDIA IS DISPLAYED....WILL **COPY PROGRAMS** LIKE SMARTFILER, SMARTLOGO, AND ADAMCALC AND AUTOMATICALLY ADJUST DIRECTORY "BLOCKS LEFT"....PLUS MUCH MORE!

THIS IS ONE OF THE BETTER UTILITIES AVAILABLE FOR THE **ADAM** TODAY. THIS SOFTWARE WOULD BE A GREAT ASSET TO ANYONES LIBRARY.

REVIEWED BY WADE ROWLEY

Cartridge Review : "Gateway to Apshai"
 Type of Cartridge : Graphic Adventure
 Documentation : Excellent 4
 Graphic Quality : Excellent 4
 Ease of Use : Very Good 3
 Fun/Work Quality : Excellent 4
 Average/Median : Excellent 3.75

"Gateway to Apshai" by EPYX is a graphic adventure in which you are trying to map out (go through) all the levels of a 8 level dungeon. Now if anybody who is reading this is thinking "Great I figure it out once and throw it away!" think again, because on each level of dungeon you get to pick 1 out of 99 sections of dungeons with each section containing an average of 100 rooms +. At the beginning of your adventure you start out with a dagger and leather armor, but you can find and use bows and arrows, swords, shields, armor, and all sorts of magical treasures that can help or hinder you. You control your man with the joystick for movement and the keypad determines what the fire buttons do. Keypad description is below.

- | | |
|--------------------------|---------------------------------|
| 1. Fight or Fire Arrows | 7. Check Status (# of hit pts.) |
| 2. Select an Item | 8. Check Weapons |
| 3. Drop an Item | 9. Check Supplies |
| 4. Open Door | 1. Pause |
| 5. Check for Traps | 0. Skip This This Level |
| 6. Look for Secret Doors | 2. Pause |

Monsters also inhabit the dungeon and you can avoid or kill them. Gateway to Apshai is a super game that all heroes will love.

Review by Lee Frank

REVIEWS

PRODUCT: SmartBEST V1.0
PRODUCED BY: DATA DOCTOR
REVIEWED IN DDP FORMAT
CURRENT PRICE: \$18.95 (see discount order blank for members only.
WARRANTY: 30 DAY UNCONDITIONAL/5 YEAR LIMITED

THIS IS THE FIRST PACKAGE I HAVE HAD A CHANCE TO REVIEW FROM DATA DOCTOR. THIS PACKAGE IS A SmartBASIC ENHANCEMENT THAT CONTAINS MANY SHORTCUTS FOR THOSE PROGRAMMERS OUT THERE. SmartBEST V1.0 ADDS 27 IMPROVEMENTS TO SmartBASIC WHICH INCLUDE PROGRAMMING COMMAND SHORTCUTS, NEW COMMANDS THAT GIVE YOU CONTROL OF ADAMS SOUND CHIP, AND EXPANDED CONTROL OF THE TEXT COLORS.

I PERSONALLY FOUND THE SOUND CHIP CONTROLS TO BE QUITE NICE. SmartBEST ALLOWS YOU TO CONTROL FOUR DIFFERENT SOUND GENERATORS AT THE SAME TIME IN EITHER IMMEDIATE OR PROGRAMMING MODES. BY POKING IN DIFFERENT VALUES YOU CAN CHANGE THE VOLUME AND TONE WHICH ENABLES YOU TO CREATE YOUR OWN EFFECTS. SmartBEST GIVES YOU NINE COMMANDS TO CONTROL THE THREE VOICE AND ONE NOISE CHANNELS. YOU CAN USE ANY ONE OF THE FOUR CHANNELS OR ANY COMBINATION OF THE FOUR TO CREATE EXCITING EFFECTS FOR YOUR PROGRAMS. THE NOISE COMMAND ALLOWS EIGHT SOUNDS RANGING FROM PHASER FIRE TO HELICOPTER MOTOR PULSATION WHILE THE VOICE 1,2,AND 3 CHANNELS ALLOW AN ALMOST INFINITE NUMBER OF TONE AND VOLUME COMBINATIONS.

WITH THE COMMAND SHORTCUTS, VIDEO CONTROL, SOUND CONTROL AND MUCH MORE, I FIND SmartBEST TO BE GREAT PROGRAMMING TOOL. FOR ANYONE THAT IS SERIOUS ABOUT THE PROGRAMS THEY WRITE, THIS PROGRAM WOULD BE A GREAT ASSET.
REVIEWED BY WADE ROWLEY

SOFTWARE DISCOUNT

I AM HAPPY TO BE ABLE TO EXTEND ANOTHER SOFTWARE DISCOUNT TO ADAM-X-CHANGE MEMBERS! MY THANKS TO THE DATA DOCTOR! BE SURE TO USE THE SPECIAL ORDER FORM ENCLOSED AND DO NOT FORGET TO INCLUDE YOUR MEMBERSHIP NUMBER IN THE SPACE PROVIDED.

NOTICE

A YEAR HAS PASSED SINCE THE ADAM-X-CHANGE WAS FORMED, AND IN THE PAST YEAR I HAVE REACHED HUNDREDS ADAM USERS. I HAVE FOUND THAT THE USER'S GROUP AND THE COBRA BBS ARE TOO MUCH TO HANDLE ON MY OWN. I HAVE GIVEN THIS MUCH THOUGHT AND HAVE DECIDED TO PASS THE REIGNS OF THE ADAM-X-CHANGE ON TO ANOTHER. THIS WILL BE MY LAST ISSUE AS EDITOR/PUBLISHER THE NEXT ISSUE WILL BE HANDLED BY OTHERS. I WILL, HOWEVER, NOW BE ABLE TO PUT MORE EFFORT INTO THE COBRA BBS (WHICH WILL NO LONGER BE PART OF THE ADAM-X-CHANGE) IN AN EFFORT TO MAKE IT ONE OF THE BEST IN THE COUNTRY. ALL CORRESPONDENCE WILL BE HANDLED THROUGH THE SAME ADDRESS AND AS A MEMBER YOU SHOULD SEE NO APPARENT CHANGES. I WILL STILL HAPPILY ACCEPT AND ANSWER ALL LETTERS TO MY ATTENTION! THANK YOU FOR YOUR SUPPORT!

WADE ROWLEY

PS. YES! ALL ADAM-X-CHANGE MEMBERS WILL STILL HAVE FULL ACCESS ON THE COBRA!!!!

the ADAM-X-CHANGE is in no way affiliated with COLECO INDUSTRIES, Inc..
the ADAM-X-CHANGE and COLECO are not responsible for any losses due to the use of any items contained in this newsletter, further they offer no warranties either expressed or implied.
the user assumes full responsibility for all consequences resulting from the use of programs contained within this newsletter.
some of the views and opinions contained in this newsletter are not necessarily shared by the ADAM-X-CHANGE.
Wade Rowley, Editor and Publisher
vol. 86 no. 11/12
COPYRIGHT 1985/86 THE ADAM-X-CHANGE

DATA DOCTOR

**YOUR LOGICAL CHOICE
-for ADAM™ software-**

#1 in Quality #1 in Value
#1 in Service #1 in Growth in 1985

- *****
- Some of our standard software features are:
- * Multi-color screens
- * Full use of the sound chip
- * Super-fast LOADING (even on DDPS)
- * Full-length programs
- * SmartKEY referencing
- * Graphics displays/sprite animation
- * Input control-keyclick, bckspc to erase, etc
- * True randomization for games
- * User-friendly operation
- * Menu-driven programs
- * Menu-driven software packages
- * 30-day unconditional money-back guarantee
- * Detailed instruction manuals
- * Disk and datapack versions
- * Fast delivery (most shipped within 48 hrs)
- * FREE shipping and handling
- * Hacker challenge to infiltrate our LIST protection
- * And a 5-year limited warranty on all storage media.

- YOUR SATISFACTION IS OUR #1 GOAL -

*** SmartBEST V1.0 \$18.95
This is one of the fastest selling packages ever written for the ADAM computer. It adds 27 enhancements to SmartBASIC: nine actual sound commands (VOICE1, V1off, VOICE2, V2off, VOICE3, V3off, NOISE, OFF, and HUSH), the RESTORE(line number) command, and routines to change all text colors without clearing the screen, plus much more! An essential package for every serious ADAM programmer.

*** STRATEGY STRAIN I \$2 85
This package is a dynamic collection of nine mentally challenging games. Save the federation in the full-length text adventure, KLINGON CHALLENGE, using 16 action controls. FIXXATOR is a powerful reading improvement game. With SCRAMBLER you race against the clock using the game-controller to solve scrambled words. Plus several others. Each game includes numerous difficulty levels. Challenge your intellectual skills with STRATEGY STRAIN.

*** QUIKFAX QUEST I \$24.95
An exciting, easy-to-use tutorial/game. Includes ELEMENTS OF CHEMISTRY (103), U.S. STATE CAPITALS (50), and WORLD CAPITALS(197). Two players may race against the clock for high score in a multiple-choice arcade-type game or a single player may choose this option or fill-in-the-blank. Complete control to review/quiz any part of a file's database. Hardcopy options too.

DISCOUNT ORDER FORM FOR ADAM-X-CHANGE MEMBERS

Send check or> DATA DOCTOR
money order with> Dept: A-X-C
order form to:> P.O. Box 776
Oak Hill, WV
25901
(U.S. FUNDS ONLY)

TITLE:
DDP or DISK:
QUANTITY:
EXTENDED PRICE:
SUBTOTAL:
LESS 10% DISCOUNT:
GRAND TOTAL:

YOUR ADAM-X-CHANGE MEMBERSHIP #:
YOUR NAME:
ADDRESS:
CITY/STATE/ZIP:
PHONE NUMBER:

THE ADAM-X-CHANGE STORE

copyright 1985

PLEASE USE THIS FORM WHEN ORDERING OR REQUESTING REPAIR.

NAME _____

STREET _____

CITY _____

STATE/ZIP _____

PHONE () _____
optional

ALL DATA-PAKS ARE WARRANTIED AGAINST DEFECTS IN MATERIALS AND WORKMANSHIP (EXCLUDING MISUSE).

PRICES ARE AS FOLLOWS.....

DATA-PAKS	1-10 PIECES	\$3.75 EACH
DATA-PAKS	11-20 PIECES	\$3.50 EACH
BASF BRAND SS/DD DISKS		\$1.30 EACH
DATA-PAK REPAIR (smartbasic,zaxxon,etc.)		\$3.75 EACH

RIGHT HAND DIRECTORY DATA-PAKS ALSO AVAILABLE (SAME PRICE).
CENTER DIRECTORY WILL BE SENT UNLESS OTHERWISE SPECIFIED.

SHIPPING AND HANDLING RATES

1-10 PIECES	\$2.25 per order
11-20 PIECES	\$3.25 per order

ITEM	QUANTITY	X	PRICE	=	TOTAL
DATA-PAKS <1-10 PIECES>	_____	X	@\$3.75	=	_____
DATA-PAKS <11-20 PIECES>	_____	X	@\$3.50	=	_____
BASF DISKS	_____	X	@\$1.30	=	_____
DATA-PAK REPAIR	_____	X	@\$3.75	=	_____

S/H FROM ABOVE _____

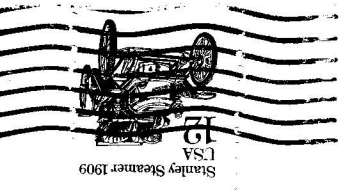
NYS RESIDENTS ADD TAX _____

TOTAL _____

PLEASE....CHECK OR MONEY ORDER (US FUNDS) ONLY.

SHIPMENTS OUTSIDE OF CONTINENTAL USA PLEASE ADD 5% OF TOTAL ORDER FOR SHIPPING.

ADAM-X-CHANGE
12863 WASBURN
WOLCOTT, NY 14590



ADAM-X-CHANGE
12863 WASHBURN
WOLCOTT, NY 14590



I  ADAM™