

ADE Pro Swap Button Add-on Instructions

These instructions describe the process of adding the same swap button feature found in the ADE Lite and ADE Pro Shield to the ADE Pro. This optional feature is for those who may want the swap button feature and who also have the necessary skills to modify their ADE Pro device.

Drive 1 (D1) multi-disk swap support requires that all images in the set have the same name except for the file extension. It allows up to four images (.dsk, .ds2, .ds3, and .ds4) and can be selected by pressing the swap button which will mount the next disk in the set to the corresponding .dsk-.ds4 image. The amount of flashes indicates the disk image in the set that was mounted. Each button press advances to the next image until it loops back around to the first disk image (.dsk).

What Is Needed

- Phillips screwdriver
- Drill and drill bit
- Soldering iron and solder
- Heat shrink tubing or electrical tape
- Single-pole single-throw (SPST) normally-open (NO) momentary switch – GR18-29A-BLK (www.jameco.com) or equivalent
- 24 AWG stranded hook-up wire – 2305207 (www.jameco.com) or equivalent



Figure 1

Procedure

1. Remove any cables and the SD card from the device.
2. Remove the four silver front panel screws.
3. Lift up the front panel to expose the two-pin power connector.
4. Disconnect the two-pin connector to separate the PCB section from the housing. The connector may be hot glued and may require a little force and movement to disconnect. *Only pull on the connector and NOT the wires. Rubbing alcohol added to the base of the hot glue and PCB can help greatly in removing it. See **Figure 1**.*
5. Drill a hole that correctly matches your switch mounting shaft diameter and insure proper placement location. Mounting the switch behind the power inlet wiring area will ensure it will be out of the way from any of the internals when the unit is closed. *Do NOT mount the switch yet and only check for fit. See **Figure 2** for placement.*
6. Cut two five-inch lengths of wire, solder them to the switch terminals, and insulate them with heat shrink tubing or electrical tape.
7. Solder the other side of the switch wires (direction doesn't matter) to the D42 and GND pads on the PCB. See **Figure 3** for placement.



Figure 2

8. Double-check all connections and make sure no solder blobs or bridges were created and touching adjacent pads, especially between GND and VIN and 5V on the PCB.
9. Mount the switch in the rear housing and reverse steps 4 to 1 to close the ADE Pro unit.

Testing/Verifying Your Work

Testing will require you to install a multi-disk image set on the SD card to verify correct operation. For example, a multi-disk game like *The Vase of Turr* or *Temple of the Snow Dragon* is a great way to test it. Remember, all images in the set must have the same name except for the extension. When the game asks you to swap the disk, you can now simply push the swap button.

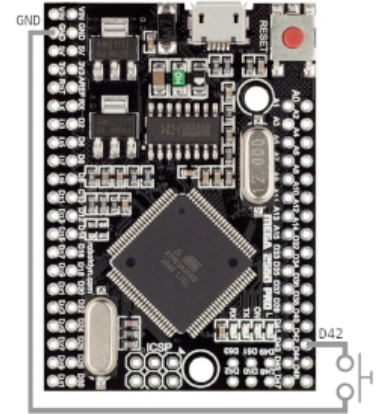


Figure 3

Examples

Vase of Turr, The (Walters Software Co.).dsk
Vase of Turr, The (Walters Software Co.).ds2

Temple of the Snow Dragon (1988) (Digital Adventures).dsk
Temple of the Snow Dragon (1988) (Digital Adventures).ds2

Congratulations, you successfully installed the swap button feature!

